

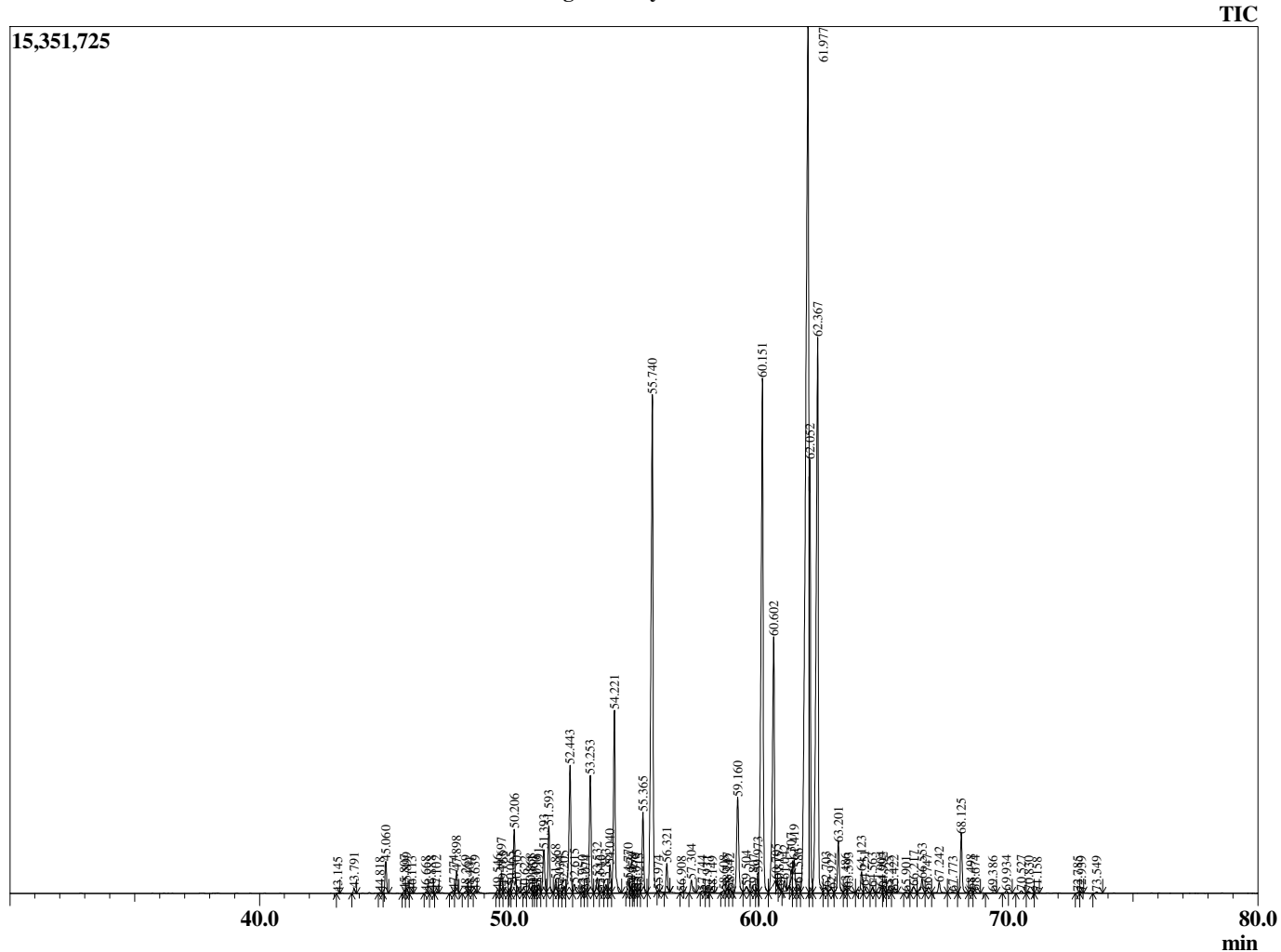
Sample Information

Analyzed : 3/9/2019 2:42:58 AM
 Sample Type : Essential Oil
 Sample Name : Amyris balsamifera
 Injection Volume : 0.10

Amyris
 Lot# HAK8-KW
 Country: Haiti



Chromatogram Amyris balsamifera



R.Time	Name	Area%
43.145	alpha-Cubebene	0.01
43.791	Unidentified	0.08
44.818	Unidentified	0.01
45.060	alpha-Copaene	0.52
45.807	Unidentified	0.05
45.899	beta-Elemene	0.09
46.113	cis-beta-Caryophyllene	0.02
46.668	Sesquithujene isomer	0.02
46.888	Unidentified	0.03
47.102	Unidentified	0.03
47.774	alpha-Santalene	0.06
47.898	beta-Caryophyllene	0.37
48.269	Unidentified	0.05
48.404	gamma-Elemene	0.01
48.639	trans-alpha-Bergamotene	0.03
49.546	epi-beta-Santalene	0.06
49.697	alpha-Acoradiene	0.35
49.765	trans-beta-Farnesene	0.08
50.065	Unidentified	0.08
50.206	beta-Acoradiene	1.25
50.305	Unidentified	0.10
50.622	Unidentified	0.02
50.868	Unidentified	0.08
50.961	Unidentified	0.02
51.090	Unidentified	0.02
51.191	beta-Chamigrene	0.17
51.393	gamma-Curcumene	0.83
51.593	Ar-Curcumene	1.13
51.868	Unidentified	0.24
52.034	delta-Selinene	0.05
52.205	beta-Selinene	0.13
52.443	alpha-Zingiberene	2.57
52.615	Unidentified	0.21
52.950	Unidentified	0.03
53.074	Unidentified	0.05
53.253	beta-Bisabolene + Dihydroagarofuran	2.16
53.532	4-epi-cis-Dihydroagarofuran	0.28
53.646	Unidentified	0.04
53.883	delta-Cadinene	0.14
54.040	(-)-alpha-Panasinsen	0.49
54.221	beta-Sesquiphellandrene	3.31
54.770	alpha-Maaline	0.22
54.874	Unidentified	0.09
54.958	Unidentified	0.04
55.070	Unidentified	0.06
55.215	Unidentified	0.07
55.365	Selina-3,7(11)-diene	1.37
55.740	Elemol	10.63
55.974	Unidentified	0.01
56.321	trans-Nerolidol	0.47
56.908	trans-Dihydroneerolidol	0.01
57.304	Unidentified	0.24
57.744	Caryophyllene oxide	0.03
57.931	Unidentified	0.02
58.149	Unidentified	0.02
58.608	Eudesm-5-en-11-ol	0.05
58.747	Unidentified	0.10
58.842	Unidentified	0.06
59.160	5-epi-7-epi-alpha-Eudesmol	2.12
59.504	Unidentified	0.17
59.807	Unidentified	0.07
59.973	Unidentified	0.28

R.Time	Name	Area%
60.151	10-epi-gamma-Eudesmol	11.22
60.602	gamma-Eudesmol	6.10
60.705	Unidentified	0.02
60.815	Unidentified	0.02
61.042	Eremoligenol isomer	0.21
61.307	Unidentified	0.14
61.419	Unidentified	0.70
61.586	Unidentified	0.22
61.977	Valerianol	26.70
62.052	alpha-Eudesmol + beta-Eudesmol	5.85
62.367	7-epi-alpha-Eudesmol	12.64
62.703	Unidentified	0.18
62.922	Unidentified	0.12
63.201	Unidentified	1.00
63.486	11-alpha-H-Himachal-4-en-1-beta-ol	0.09
63.593	Unidentified	0.15
64.123	Unidentified	0.45
64.251	Juniper camphor	0.15
64.563	Unidentified	0.10
64.904	Unidentified	0.12
64.992	(2E,6E)-Farnesol	0.08
65.225	Unidentified	0.02
65.422	Unidentified	0.04
65.901	Unidentified	0.02
66.217	Unidentified	0.15
66.553	Unidentified	0.33
66.747	Unidentified	0.06
67.242	Albicanol	0.23
67.773	Unidentified	0.03
68.125	Drimenol	1.10
68.498	Rosifoliol	0.06
68.674	Unidentified	0.06
69.386	Unidentified	0.02
69.934	Unidentified	0.04
70.527	Unidentified	0.05
70.830	Unidentified	0.04
71.158	Unidentified	0.02
72.785	Unidentified	0.02
72.939	Unidentified	0.02
73.549	Unidentified	0.03
		100.00